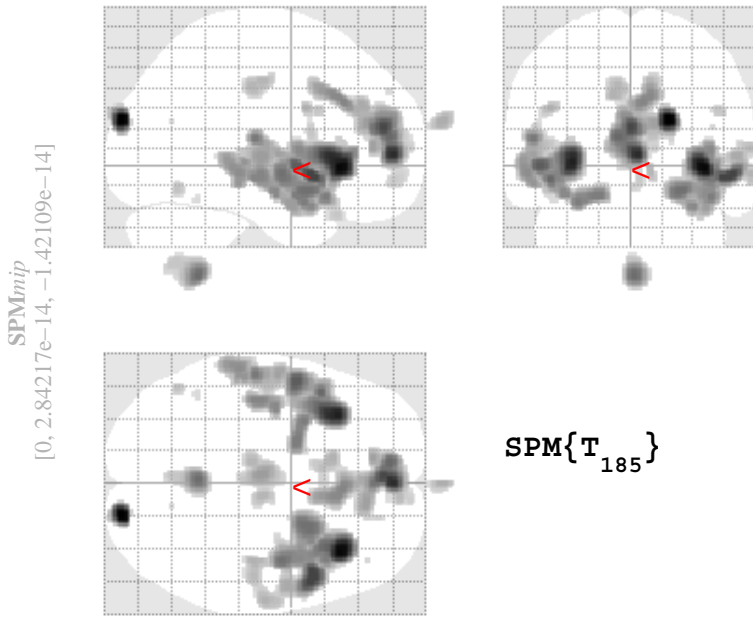
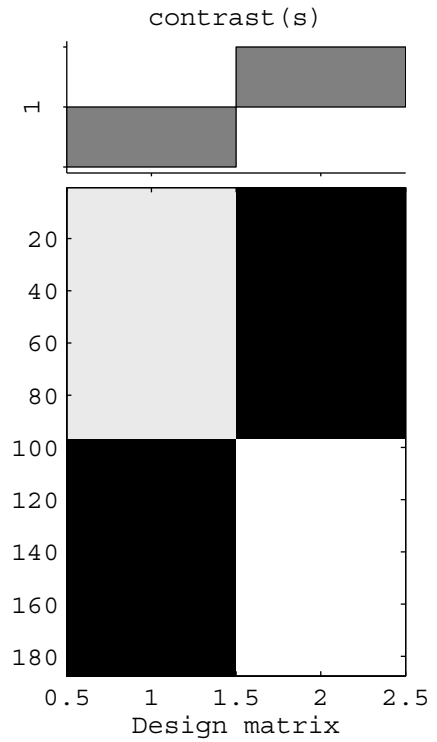


nc-sch



SPMresults: E:\sch\_data\sgmv\res\_no\_mask  
 Height threshold T = 4.985285 {p<0.05 (FWE)}  
 Extent threshold k = 0 voxels



Statistics: search volume: image mask: .\sgmv\rBinaryMask\_r\_f.nii,1

set-level		cluster-level			peak-level					mm	mm	mm	
p	c	p <sub>FWE-corr</sub>	q <sub>FDR-corr</sub>	k <sub>E</sub>	p <sub>uncorr</sub>	p <sub>FWE-corr</sub>	q <sub>FDR-corr</sub>	T	(Z <sub>≡</sub> )	p <sub>uncorr</sub>			

*no suprathreshold clusters*

table shows 16 local maxima more than 4.0mm apart

Height threshold: T = 4.99, p = 0.000 (0.000)	Degrees of freedom = [1.0, 185.0]
Extent threshold: k = 0 voxels, p = 1.000 (0.000)	FWHM = 13.6 14.1 14.2 mm mm mm; 9.1 9.4 9.4 {voxels}
Expected voxels per cluster, <k> = 22.400	Volume: 20129 = 5964 voxels = 4.7 resels
Expected number of clusters, <c> = 0.00	Voxel size: 1.5 1.5 1.5 mm mm mm; (resel = 806.34 voxels)
FWEp: 3.602, FDRp: Inf, FWEc: Inf, FDRc: Inf	